

Subscribe To The Eagle Lake Headlight - 979-234-5521

James Receives Grandfather Of Year Award

Sunday, November 18, the Missouri City-Houston Metro Chapter Youth and Junior Divisions of the National Women of Achievement, Incorporated honored grandparents at its annual celebration at Brady's Landing in Houston.

Rev. J.H. James, of Eagle Lake, was one of the honorees. Because of his exemplary service to youth and the community, he was the recipient of the 2007 Missouri City-Houston Metro Chapter Grandfather of the Year Award.

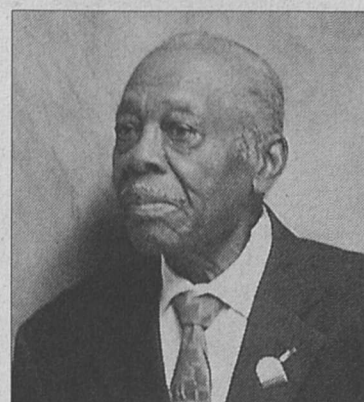
He received certificates of recognition from U.S. Congressman Al Green, State Representative Sylvester Turner, State Representative Alma A. Allen, Harris County Commissioner El Franco Lee and Harris County Precinct 7 Constable May Walker.

Rev. James' four daughters, (Lorean Toliver, Norma Gite, Erma McGrew and Nancy Williams), his 10 grandchildren, nine great-grandchildren and many friends joined the attendees in

applauding him during this most memorable time for him.

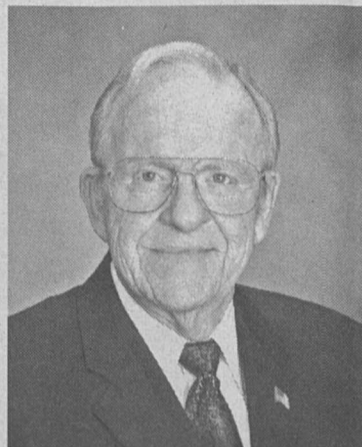
In his acceptance remarks on behalf of the honorees, Rev. James who recently celebrated his ninetieth birthday encouraged the Youth and Junior Achievers to learn all they can, to be faithful and to know that God is with them at all times.

Mrs. Bobbie Wooten Moorehead, the President of the Missouri City-Houston Metro Chapter, nominated and sponsored Rev. James.



Rev. J.H. James

KC's Simple Simon's Pizza By The Slice
December 8 Parade Day
5 p.m.-8 p.m.
\$2.00 Each



Hon. George Cason

Cason Charter Member Of Judge's College

The Honorable George Cason, Justice of the Peace, Pct. 4 of Colorado County was recently inducted as a charter member into Texas Justice Court Judges Association (JCJC) College of Justice Judges. The College encourages and recognizes judges who strive for advanced education over and above the state mandated education requirements.

Judge Cason was one of 91 justice court judges throughout the state to complete requirements to qualify for the College. He completed a course of advanced study of justice court jurisdictional issues.

According to JCJA President Alice Tomerlin, "You're to be congratulated and recognized for taking the initiative to acquire advanced study to enhance your judicial skills which has a positive effect in the administration of law you offer your constituents."

Kirkendall To Seek Re-Election

W.C. (Bud) Kirkendall today announced his candidacy for re-election as judge of the 2nd 25th Judicial District of Texas, covering Colorado, Gonzales, Guadalupe and Lavaca counties. Judge Kirkendall has served in this office since January 1, 2005. From June, 1984 until December 31, 2004, he served as the district attorney for the 25th Judicial District.

Judge Kirkendall has previously been honored as the Texas Prosecutor of the Year by the State Bar of Texas and as the recipient of the Political Courage Award from the Jon Ben Sheppard Public Leadership Forum. He was elected by his peers as president and then chairman of the board of the Texas District and County Attorneys Association. As judge, he has been elected Guadalupe County local administrative judge by his colleagues.

A long-time member of First United Methodist Church of

Seguin, Judge Kirkendall has been active in community affairs including Little League, Seguin Youth Basketball Association, Seguin Pregnancy Center, Guadalupe County Children's Advocacy Center and others.

He has been married for 33

years to Alice Scull Kirkendall. They have three children, Katie Burrus, 27, an attorney in Dallas, Meg, 24, a third year student at the University of Texas Law School and Sam, 22, a first year student at the University of Texas Medical School-Houston.

Emergency Farm Relief Loans Being Accepted

Applications for emergency farm loans for losses caused by excessive rain that occurred on June 14, 2007 through August 30, 2007, are being accepted at the Farm Service Agency (FSA) office located in Bellville, Farm Loan Manager Tim Respondek said today.

Colorado County is one of 7 in Texas recently named by the Secretary of Agriculture eligible for loans to cover part of actual production and/or physical losses caused by excessive rain that occurred on June 14, 2007 through August 30, 2007.

Mr. Respondek said farmers may be eligible for loans of up to 100 percent of their actual losses or the operating loan needed to continue the agricultural business, whichever is less.

For farmers unable to obtain credit from private commercial lenders, the interest rate is 3.75 percent.

"As a general rule, a farmer must have suffered at least a 30 percent loss of production to be eligible for an FSA emergency loan," Mr. Respondek said. Farmers participating in the Federal Crop insurance program will have to consider proceeds from those programs in determining their loss.

"Applications for loans under this emergency designation will be accepted until July 16, 2008, but farmers should apply as soon as possible."

"Delays in applying could create backlogs in processing, with possible delays into the new farming season," Mr. Respondek said.

FSA is a credit agency of the U.S. Department of Agriculture.

It is authorized to provide disaster emergency loans to recognized farmers who work at and rely on farming for a substantial part of their living.

Eligibility is extended to individual farmers who meet U. S. citizenship requirements and to farming partnerships, corpora-

tions, or cooperatives in which U. S. citizenship requirements are met by individuals holding a majority interest.

The FSA office in Bellville is open from 8:00 AM until 4:30 PM Monday through Friday.

Prairie Edge Museum Memorials

Recent memorials to Prairie Edge Museum include: In memory of **Beatrice Scott**: Lucy Contreras, Ted and Louise Brunner, Joe Wendel, Helen and Kenneth Craig, Christine Owen, Dolores G. Vacek, Mr. and Mrs. A.E. Meyer, Grace and Mike Cooper, Jack and Jean Leopold, Mae Ashby, Marilyn and John Thomas; In memory of **Dolletta Andreas**: Christine Owen.

In memory of **Orville Powers**: Mae Ashby. In memory of **Bill Hanley**: Helen and Kenneth Craig, Grace and Mike Cooper.

In memory of **Cheryl Tomaski**: Christine Owen.

In memory of **Joseph Mahoney Greenlee**: Bill and Rosanne Harrison and Jim and Randa Simmons.

In memory of **Annie Broesche**: Kenneth and Helen Craig. In memory of **Richard "Trip" Clipson**: Helen and Kenneth Craig. In memory of **Rev. Robert Tupper**: Christine Owen.

In memory of **M/Sgt. Jeffrey McKinney**: Christine Owen. In memory of **Avis Laughlin**: Helen and Kenneth Craig. In memory of **Kenneth Meinecke**: Grace Dell and Mike Cooper.

In memory of **Rollin Baker**: Jean Tordoff, Mr. and Mrs. Lloyd Downey; Kenneth and Helen Craig; Mae Ashby, Tarleton F. Smith, Dennis G. Rainey PhD, Jack and Judith Johnson, O. Keith Pauley, Dr. and Mrs. Andrew Barger, Charles and Judy Warner, Woodrow Tyler, Friends and Co-Workers of Bruce Baker.

All money given in memorials at the museum goes into its Endowment Fund and is used for upkeep and modernization of the building.

Amy's Unique Boutique
 Sealy, Texas 979-885-7220
OPEN LATE
 Thursdays and Fridays until 8 pm
 Saturdays until 6 pm
for the holidays
 beginning Nov. 29
 10-6 Monday-Friday, 10-3 Saturday
 223 Main St. • Sealy • 979-885-7220

Let First National help make your Christmas wishes come true!

FIRST National BANK

Member FDIC
 Passionate about "Your" Financial Success

Headlight Want Ads Work!

979-234-5521

CDA Holds Monthly Domino Party

Fun, food, fellowship and domino games were the order of the day at the CDA Domino Party for area senior citizens at St. Mary's Parish Hall on Wednesday, November 28 at 2 p.m.

Thirty-six seniors were served chicken salad on lettuce, assorted crackers, fruited orange jello, cookies, iced tea and coffee. Serving as hostesses were Helen Noteboom, Irene Seifert, Rosemary Wied, Leona Brzozowski, Edith Drlak and Anita Meisner.

At the conclusion of the party domino winners were announced; 42- hi, Agnes Labay and Lily Pinchback; 42 low, Mary Ann Waligura; straight dominos, Viola Kaluza, Irene Seifert, Pauline Solomon and Delores Hoelscher; Chicken foot, Leona Brzozowski; and Train, Paul Baumgarten.

The traveling prize was awarded to Marie Stavinoha.

Those attending sang Happy Birthday to Leona Wesselski and Patsy Miller, both these ladies celebrated birthdays during the month and each received a small gift.

The next party will be held on December 12 at St. Mary's Parish Hall in Nada at 2 p.m.

Subscribe To The Eagle Lake Headlight - 979-234-5521

Switch to Farm Bureau Insurance

and save up to **40%**

FARM BUREAU INSURANCE
 Auto • Home • Life

Will Fuchs, Agent
 Pam Bourque, Agent
 Ervin Heffley, Agent
 Jeremy Price, Agent
 Trey Wise, Agency Manager
979-732-2383

With a reputation for **personal service** and **great coverage**, Farm Bureau Insurance may also be your source for significant savings on your premium.

Call a Farm Bureau Insurance Agent today to set up a free auto insurance review, and discover how switching to Farm Bureau Insurance could qualify you for up to a 40% discount.

Helping You is what we do best.

sfbli.com • txfb-ins.com

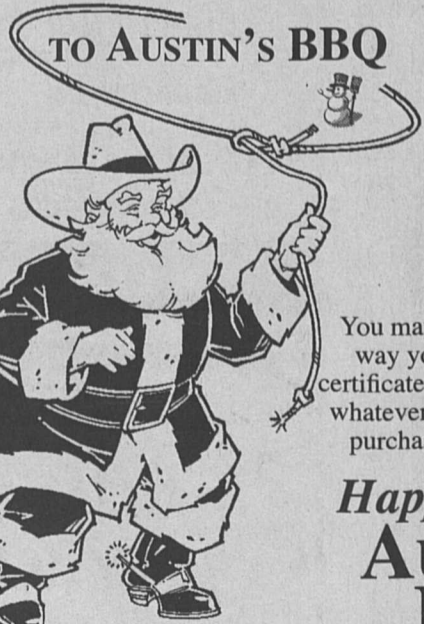
Southern Farm Bureau Casualty Insurance Company, Ridgeland, MS
 Southern Farm Bureau Life Insurance Company, Jackson, MS
 Farm Bureau County Mutual Insurance Company of Texas
 Texas Farm Bureau Mutual Insurance Company,
 Texas Farm Bureau Underwriters

Round Up Some Cheer!
Just the Thing for the Hard-To-Buy-For or Last Minute...

Gift Certificates!

Purchase \$100 worth of Gift Certificates now through Dec. 31, 2007, and get

\$15-Worth FREE!



You may buy the \$100 in any way you'd like... four \$25 certificates, ten \$10 certificates... whatever! But, they must all be purchased at the same time.

Happy Holidays AUSTIN'S BBQ

507 E. Main • Eagle Lake • 979-234-5250

